

# VACUUM LOADERS

# TVL SERIES

- **Micro PLC based Controller**
- **Throughput of 50 to 1000 LB / HR**
- **5 Models to choose from:**
  - TVL-1 : non-proportioning
  - TVL-3 : non-proportioning
  - TVL-5 : non-proportioning
  - TVL-2 : proportioning
  - TVL-4 : proportioning

**The Best Choice for  
Your Bottom Line**

**... not to mention your  
material loading needs!**

### ***Temptek TVL Series Vacuum Loaders***

are engineered and built to provide years of reliable service. The modular design allows easy access to maintenance points and quick cleanout for material changeover. They are ideally suited for virgin and/or regrind material.

- Provides 50 to 1000 lb/hr thru-put rate with reliable energy efficient motors.
- Operation is guaranteed with accumulator tank assures stable source of compressed air for filter blowback.
- Less maintenance with polyester filter to trap fines and aluminum support structure.
- Complete and effective filter cleaning with compressed air blowback after every loading cycle.
- Easy "no tool" access via the stainless steel band clamp with safety latch.
- Long service life with the heavy duty stainless steel construction.
- Reliable vacuum is maintained with custom molded neoprene gasket at dump throat and between modular sections.
- Material is always present and ready to load with the low-level switch located at discharge gate (micro magnetic switch available as an option).
- Precise metering of material is ensured with counter balanced discharge gate that automatically closes after evacuation.
- Loading speed is ensured with the tangential inlet that minimizes material degradation.



TVL-5 shown mounted on hopper.

### ***Micro PLC Based Control Instrument***

- Complete programming and monitoring capabilities
- Pre-set material proportions and layering of conveyed material
- Can be remotely located at operator level.



The Solid State Temperature control Instrument is standard on all models of TVL Series Vacuum Loaders.

**PRICE & PERFORMANCE... for the LONG TERM**

525 East Stop 18 Road Greenwood, IN 46142 317-887-6352 fax: 317-881-1277 web site: [www.Temptek.com](http://www.Temptek.com) email: [sales@Temptek.com](mailto:sales@Temptek.com)

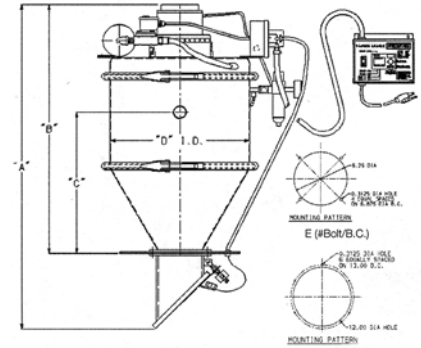
# TEMPTEK®

since 1989

# SPECIFICATIONS

## 'TVL' SERIES SPECIFICATIONS

MODEL #	TVL-1 <sup>1</sup>	TVL-3 <sup>1</sup>	TVL-5 <sup>1</sup>	TVL-2 <sup>2</sup>	TVL-4 <sup>2</sup>
<b>VOLUME (cu. ft.)</b>	1.0	1/3	1/8	1.0	1/3
<b>RESIN CAPACITY (lbs)</b>	35	12	4.4	35	12
<b>DISCHARGE DIAMETER</b>	5"	2"	2"	5"	2"
<b>TOTAL LOAD CYCLES (sec.)</b>	0-999	0-999	0-999	0-999	0-999
<b>DUMP CYCLE (sec.)</b>	0-999	0-999	0-999	0-999	0-999
<b>RATIO CYCLE (sec.)</b>	n/a	n/a	n/a	0-999	0-999
<b>COMPRESSED AIR VOLUME (CFM)</b>	.2	.2	.2	.2	.2
<b>AMPS @ 115V</b>	13	13	8	13	13
<b>DIMENSION A</b>	37.6"	28.0"	21.0"	37.6"	28.0"
<b>DIMENSION B</b>	28.9"	21.6"	15.4"	28.9"	21.6"
<b>DIMENSION C</b>	17.4"	10.7"	5.1"	16.4"	10.4"
<b>DIMENSION D</b>	16.0"	10.0"	6.0"	16.0"	10.0"
<b>DIMENSION E</b>	6/13.0"	4/6.9"	4/6.9"	6/13.0"	4/6.9"
<b>SHIPPING WEIGHT</b>	80 lbs	60 lbs	50 lbs	115 lbs	75 lbs



Notes: 1. Non-proportioning loader. 2. Proportioning loader.

### GENERAL SPECIFICATIONS - ALL MODELS

**VOLTAGE:** 115v / 1ph / 50-60Hz  
220v / 1ph / 50-60Hz

**INLET DIAMETER:** 1 1/2" OD

**VACUUM:** 7.0" Hg.

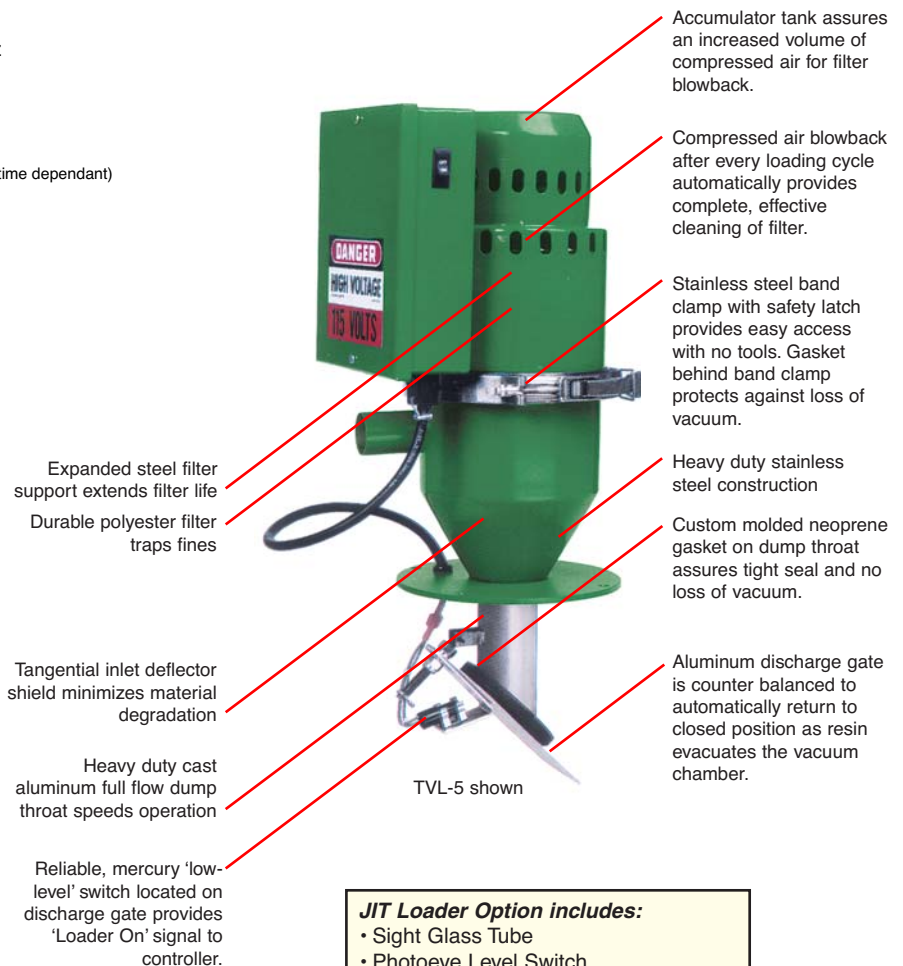
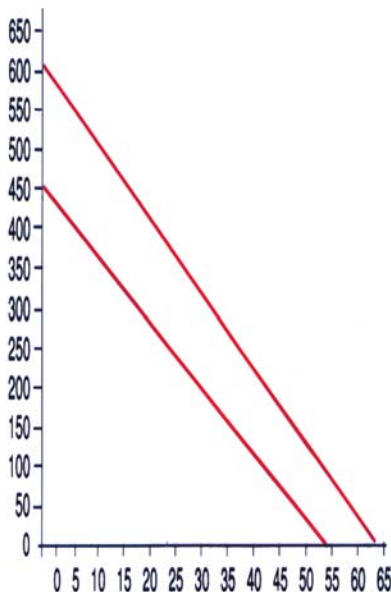
**PULSE DURATION:** 500 milliseconds

**TOTAL PULSES:** 1-499 (adjustable, dump time dependant)

**AIR SERVICE:** 80 PSI required

### FLOW RATE GRAPH

Note: flow rates and capacities are based on free-flowing pellets weighing 38 pounds per cubic foot, with a vertical rise of 12 feet and on 90° coupling. For conveying powders, or materials outside the above parameters, please consult the factory. It is recommended a sample of this material be submitted to our laboratory before recommendations can be made and accurate flow/rates established.



- JIT Loader Option includes:**
- Sight Glass Tube
  - Photoeye Level Switch
  - 3 Pole Twist - Lock Plug
  - Aluminum Plate for Secure Mounting
  - Adjustable Level Sensor

## PRICE & PERFORMANCE... for the LONG TERM

525 East Stop 18 Road Greenwood, IN 46142 317-887-6352 fax: 317-881-1277 web site: www.Temptek.com email: sales@Temptek.com

Since product innovation and improvement is our constant goal, all features and specifications are subject to change without notice. ©2005 TEMPTTEK, INC. form # ADV-579 2/05



since 1989